

# DAKOTA

• TRADITIONAL SERIES •



---

*Total SQ. FT. 1428*

*First Floor SQ. FT. 816*

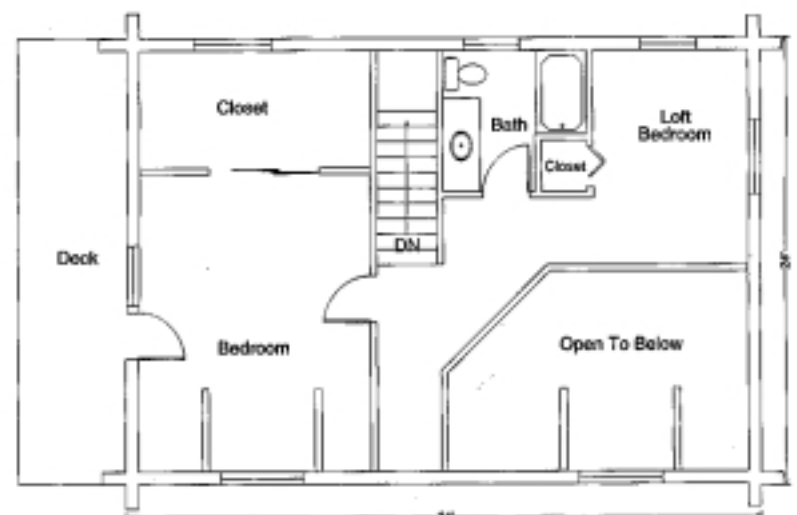
*Second Floor SQ. FT. 612*

---

### *Features*

- Large Kitchen Dining Room (Std.)
- Comfortable Front Porch (Optional)
- Loft Bedroom (Std.)
- Expansive Open Loft Design (Std.)
- Large Fireplace (Optional)
- Balcony (Std.)

The Dakota is a traditional style 2 story log home with 3 bedrooms and 2 baths. The large Kitchen and Dining room have ample room for a fireplace. This home may also be purchased with porch materials to be built on site. The Loft bedroom over looks the first level Living Room for a wonderful effect. As with most American TimberCraft homes, the ceilings are vaulted Open Beam Tongue & Groove.



SECOND FLOOR

